

# GPS-Enabled Tactical Digital SLR Cameras

Prepare. Capture. Analyze. Deliver.

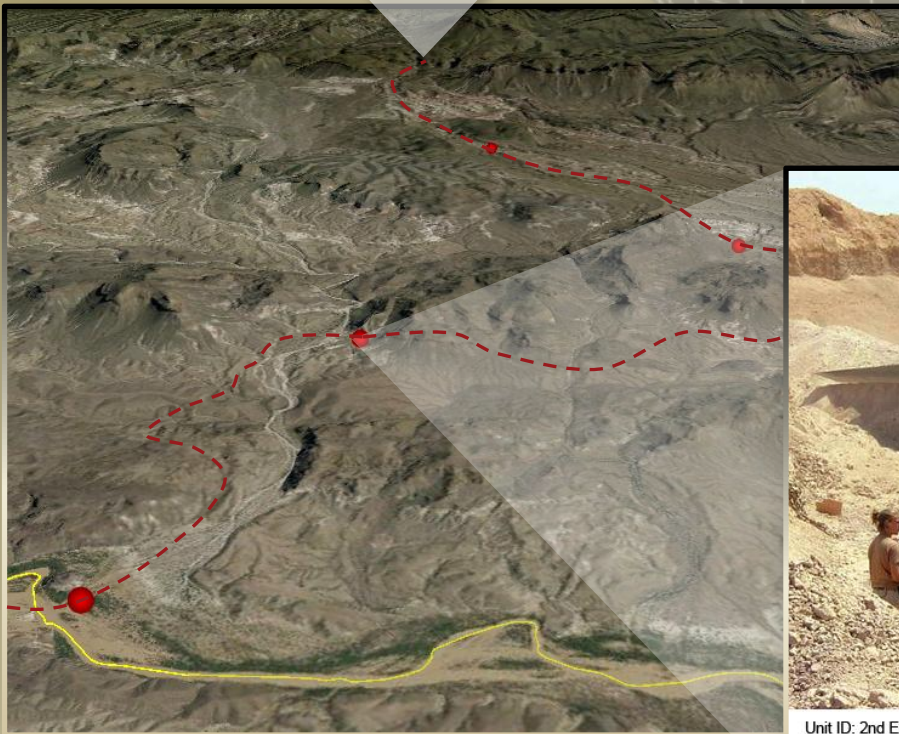
**GEO TACTICAL**  
SOLUTIONS

- ▲ Simplify Your Workflow
- ▲ Eliminate Human Error
- ▲ Save Processing Time
- ▲ Operate With Ease



## Effortless Image Mapping

Easily and accurately map your geotagged images in powerful mapping applications such as Google Earth and ArcGIS.



## Complete Data Capture

Capture the **Who, What, When, Where** and **Why** of each photograph with a simple press of the shutter!



Unit ID: 2nd EOD, 1st MLG (f)      GPS Time: 14-21-53      Operation: AO Delta  
Taken By: Lt. Zimmer      GPS Date: 2010-07-24      Operation Type: Recon  
LAT/LONG: N31.37.01.04 E69.09.58.02      MGRS: 38S MB 45956 86195      Direction: TT339.00

1. Prepare

2. Capture

3. Analyze

4. Deliver



## Digital SLR Overview

### Full Support For Image Mapping And GIS

Software plug-ins are included with all GTS digital SLR cameras which allow for seamless geocoding and mapping of images in commonly used applications such as ArcGIS, TIGR, FalconView and Google Earth. GTS' **PhotoGIS** software is also available for advanced photo management, standardized reporting, image mapping and enhanced exporting.

### Object Location

By coupling a custom outfitted DSLR with a TruPulse Laser Range Finder, the operator is able to capture accurate distance and GPS coordinates of a distant object within the resulting photograph. This capability improves data collection efficiency and allows for keeping a safe separation from hazardous areas and/or objects.



### Accurate GPS Coordinates And Direction

Equipped with a GPS unit, the operator can attach location information to pictures or videos. With the addition of GTS' exclusive firmware and modules, the operator can also register directional information to recorded images. A GPS positional fix with an accuracy of under 1m can be obtained quickly even in the presence of cloud and/or tree cover.

### Mission Specific 'Memos'

In addition to capturing GPS coordinates, direction and time, the powerful image 'memo' feature facilitated by exclusive GTS firmware allows the user to capture critical information associated with each photograph such as mission ID, mission type, unit ID, operator's name, et cetera. This information is digitally stored with each recorded image and later used for mission recaps and debrief reports.

### Automatic And Streamlined Reporting

Standardized report templates are generated in Word, Power Point or PDF and then automatically populated during image processing. Geotagged images enhanced with 'memos' fill the report and allow for additional narrative and comments.

### Maximum Durability And Performance

Digital SLRs provided by GTS offer real-world performance and durability second to none. The newest Canon EOS-1D class professional SLR cameras, for example, feature bodies made of coated cast magnesium alloy, which, while light in weight, deliver outstanding strength, rigidity and electromagnetic shielding. Furthermore, the body is extensively gasketed and sealed, making the cameras exceptionally water and dust resistant. These are truly cameras built to take on some of the world's harshest shooting conditions while delivering ultra-high quality images with every press of the shutter.



“Through multiple deployments I have used GTS' cameras and have been consistently impressed with their durability, functionality and ease of use; and your customer support has also been consistently outstanding.”

*Capt Ben Hodgins*  
**USMC 2nd Recon Battalion**

“From an intelligence analysis point of view, if you can't tell me where that picture was taken, it doesn't do me any good. Being able to link a photo to a location on a map is extremely powerful from an analysis perspective.”

*March 2010*  
**Signal Magazine**

Get In Touch  
**866.576.3918**

[Military@GeoTacticalSolutions.com](mailto:Military@GeoTacticalSolutions.com)  
[www.GeoTacticalSolutions.com/Military](http://www.GeoTacticalSolutions.com/Military)

**GEO TACTICAL**  
SOLUTIONS



**Advantage!**

