

# G700SE-M Rugged GPS Tactical Camera

Prepare. Capture. Analyze. Deliver.

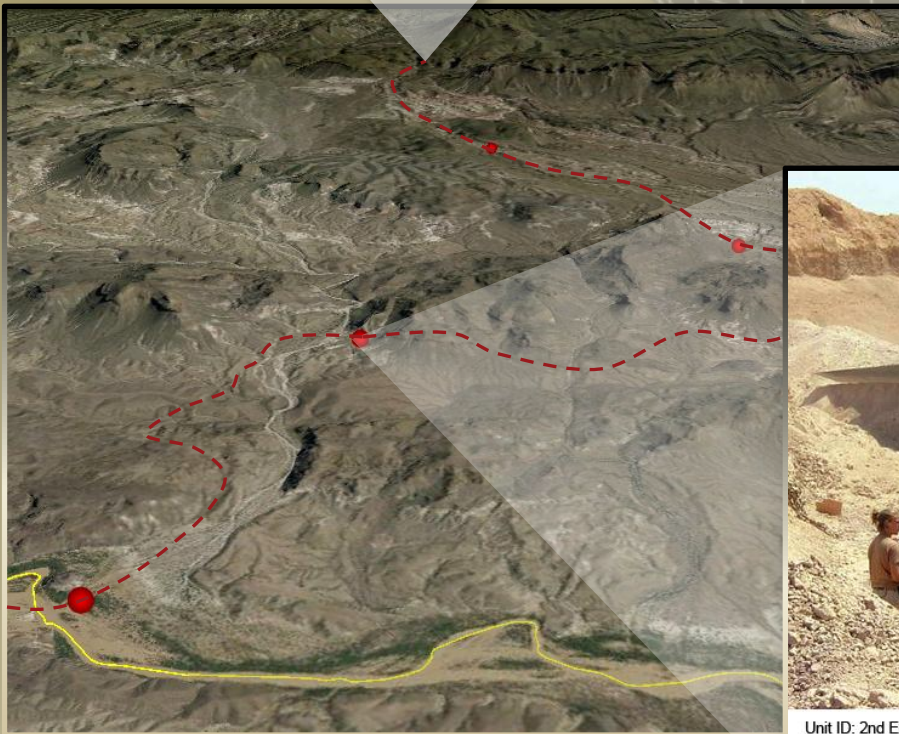
**GEO TACTICAL**  
SOLUTIONS

- ▲ Simplify Your Workflow
- ▲ Eliminate Human Error
- ▲ Save Processing Time
- ▲ Operate With Ease



## Effortless Image Mapping

Easily and accurately map your geotagged images in powerful mapping applications such as Google Earth, FalconView and ArcGIS.



## Complete Data Capture

Capture the **Who**, **What**, **When**, **Where** and **Why** of each photograph with a simple press of the shutter!



Unit ID: 2nd EOD, 1st MLG (f)      GPS Time: 14-21-53      Operation: AO Delta  
Taken By: Lt. Zimmer      GPS Date: 2010-07-24      Operation Type: Recon  
LAT/LONG: N31.37.01.04 E69.09.58.02      MGRS: 38S MB 45956 86195      Direction: TT339.00

1. Prepare

2. Capture

3. Analyze

4. Deliver



## G700SE-M Overview

### Captures Object Location With An Integrated LRF



By coupling the G700SE-M with a TruPulse Laser Range Finder, the camera is able to capture accurate distance and GPS coordinates of a distant object within the photograph. This helps to improve efficiency and allows for keeping a safe separation from hazardous areas and/or objects.

### Full Support For Image Mapping And GIS

Software plug-ins are included with the G700SE-M camera which allow for seamless geocoding and mapping of images in commonly used mapping applications such as ArcGIS, FalconView, TIGR and Google Earth. GTS' **PhotoGIS** software is also available for those who need advanced photo management, standardized reporting, image mapping and enhanced exporting capabilities.

### Accurate GPS Receiver And On-Board 3D Compass

By connecting the compact GPS unit, the operator can attach location information to pictures or videos taken with the camera. And thanks to the electronic compass support, the operator can also register directional information to recorded images. A GPS positional fix with an accuracy of under 1m can be obtained quickly even in the presence of cloud and tree cover.

### AN/PVS-14 Night Vision Compatible

The G700SE-M was built with extreme versatility in mind to offer maximum capabilities for the operator, to include night vision compatibility. Coupled with a PVS-14, operators can effectively collect photo intelligence 24/7.



### Superior Data Transfer And Security

The G700SE-M comes equipped with Bluetooth® and WiFi support along with a standard USB cable connection providing multiple data transfer options. For added security and data integrity, the camera unit supports SD WORM (Write Once Read Many) cards. These cards can be used in place of film for original documents when recording investigative scenes where data reliability might be questioned. In addition, the operator can optionally lock the entire camera, camera settings and/or internal memory access via a specified password to prevent unwanted access or changes. Locks and restrictions can easily be removed through password entry with the camera's software keyboard or by scanning a pre-defined bar code.

### Streamlined Reporting

Standardized report templates are generated in Word, Power Point or PDF and then automatically populated during image processing. Geotagged images enhanced with 'memos' fill the report and allow for additional narrative and comments.

“It really seems a shame to call the Ricoh G700SE-M Rugged GPS Field Camera simply a camera. It is so much more, as you will see, and I have come to think of it as an indispensable tool for anyone who needs to accurately document and communicate the details of their surroundings — in real time, if necessary — to others.”

*GPS World, 2011*

### G700SE-M External Features



### G700SE-M: Primary Specifications

Resolution	12.10 million effective pixels
Focal Length	5.0 mm to 25 mm (5x optical zoom)
Memory Source	SD Card, SDHC Card, SD Worm Card
Recording Mode	Still, Burst, Skew Correction, Fire, Macro, Video
Video Mode	Up to 1280x720 pixel high-quality video
Geocoding	Stills and Video, Stills with Sound
Voice Annotation	16 seconds of sound per image
LCD Screen	Large 3.0" TFT LCD monitor
Dimensions	118.8mm (W) x 71.0mm (H) x 41.0mm at thinnest
Weight	Approx. 286 g (w/o battery & SD memory card)
Power Source	Rechargeable Battery (DB-65) x1, AAA Alkaline x2
GPS	WAAS/EGNOS/MSAS enabled
GPS Accuracy	1- 4 meters, 2D RMS, WAAS enabled
GPS Acquisition Time	1 sec (hot); 38 sec (warm); 42 sec (cold)
Data Transfer	USB, Bluetooth, EyeFi/WiFi, WAN/LAN, Radio

\*Exclusive DOD Reseller

Get In Touch

**866.576.3918**

[Military@GeoTacticalSolutions.com](mailto:Military@GeoTacticalSolutions.com)

[www.GeoTacticalSolutions.com/Military](http://www.GeoTacticalSolutions.com/Military)

**GEO TACTICAL SOLUTIONS**



Advantage!

